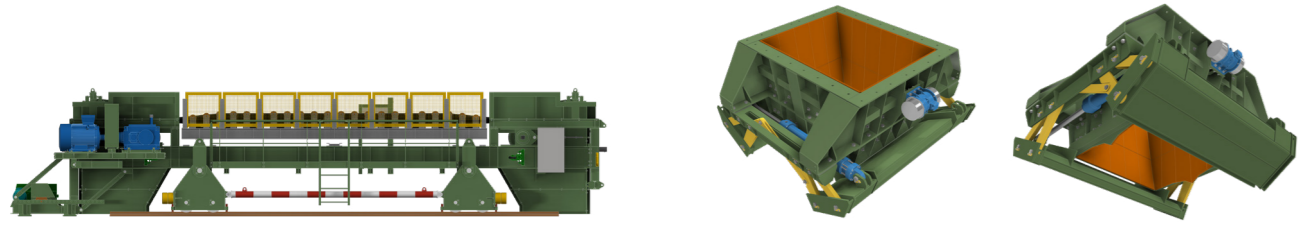


COMPLETE SYSTEMS

Stokman designs, manufactures, installs, inspects and maintains complete systems based on the customer's requirements and wishes.



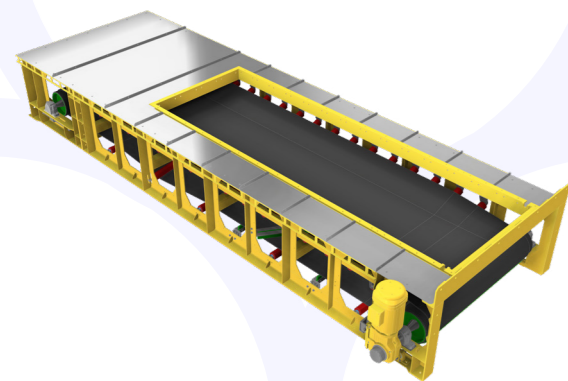
Belt feeder

At the request of our customers, we have taken a closer look at the current apron feeder system.

For a conventional apron feeder with 2 directions of rotation, one of the directions often causes the product to end up between the plates. It accumulates and the plates, chains and gears are damaged. There is also more spillage in that direction. This excessive wear gives rise to high returning costs in the maintenance budget. The overall operational costs rise due to the associated downtime and unavailability of the installation.

Stokman's belt feeder with the same 3500 m³ per hour capacity is much more maintenance friendly. This is due to the very low number of wearing components, which are easier to reach and can therefore be replaced more quickly. Less spillage, less wear, less maintenance and with the result being that the installation has an availability of 99.8%.

Compared to a conventional apron feeder, our system achieves an annual cost reduction of 86%, measured over a period of 7 years.



Feeder with free flow gates

Feeder gates eliminate the negative effects of an extraction belt. Because of this innovation the drive power of the belt is reduced and requires less components that are subject to wear.

The system also provides a constant load in the middle of the conveyor belt.

The automatic controlled system of the flow gates guarantees a well-regulated outflow and protects the lower conveyor belt against high peak loads when the chute has emptied. If the chute is installed on weighing-sensors, the outflow of the material is automatically measured and documented.

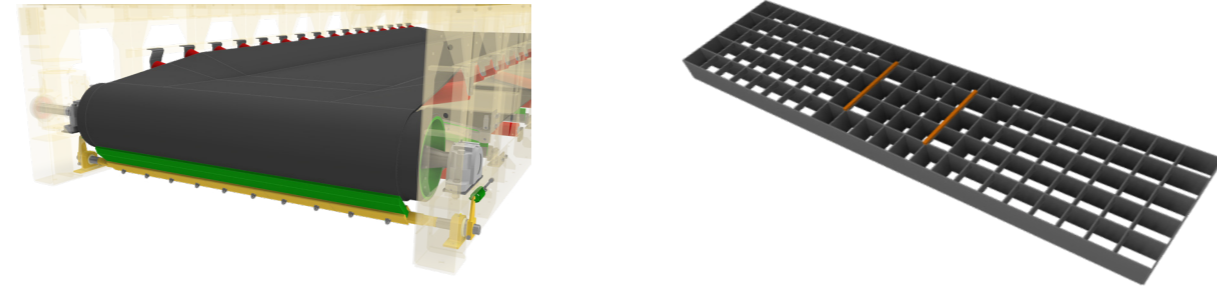
Shredder belt

We have installed a shredder belt with in- and outfeed chutes at a waste incineration plant to replace an existing installation.

To replace an existing system, we have installed a shredder belt with inlet and outlet chutes at a waste incineration plant. A number of improvements have been made and measures have been taken to prevent shredded material from rolling back. The components of the system are easily accessible through the inspection hatches. This significantly reduces costs in your maintenance budget.

The shredder above has a capacity of 250 tons of household waste/hour.

VARIOUS COMPONENTS



Scrapers

- Pre-scrapers
- Secondary scrapers
- Diagonal scrapers
- Plow scrapers

Scrapers are supplied specifically for each customer and made to suit your application. The aim is to make their use as long and targeted as possible to reduce your maintenance costs. Available from a belt width of 800mm to a belt width of 2200mm. Ask us for the available options.

Cable pulleys

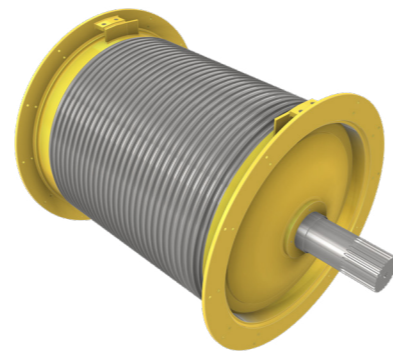
Stokman manufactures and repairs various sizes of cable pulleys. We can also advise you on the composition of this type of pulley.



Bunker grating

Stokman manufactures bunker gratings on your wishes. Our own construction department has state-of-the-art machinery, which means that they can be made quickly and at low costs.

We can make any modifications/improvements to your components in-house.



SERVICES PROVIDED



Engineering

Are you faced with a question about how to approach a project or do you already have something in mind? Our engineers are happy working alongside you. Based on decades of experience, they quickly identify any key issues to help establish a solid and qualitative project plan together with you.

Project guidance, from concept to realisation, that is what Stokman has to offer.



Inspection

Stokman is also your partner for system inspections. Regular inspections provide a clear understanding of your installation's condition, helping you stay ahead of potential issues. After each inspection, you'll receive a

detailed report, complete with photos and recommended actions to address any concerns. Our inspection method is the result of years of experience, making the Stokman report uniquely thorough. It offers an excellent overview of your installation, enabling you to prioritize preventive maintenance and avoid costly damage, replacements, and downtime.

If you have any questions or need more information, feel free to contact us anytime for more details on scheduling an inspection.

lid
koninklijke
metaalunie

 MACHINEFABRIEK
STOKMAN

Address
Industrial Area Dombosch
Brasem 18
4941 SE Raamsdonksveer
The Netherlands

Contact
+31 162 51 60 40
info@stokmanbv.com

stokmanbv.com

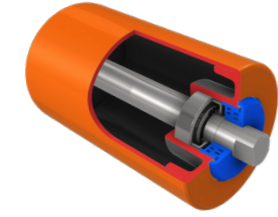
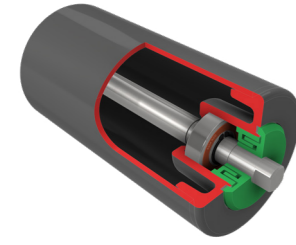
 MACHINEFABRIEK
STOKMAN

YOUR PARTNER IN BULK HANDLING



ROLLERS

SCW



Distinguished by quality

Stokman SCW rollers are designed and produced in our machine workshop in Raamsdonksveer. We only use certified materials, which ensures that our rollers continue to function optimally even under extreme conditions and thus make a major contribution to increasing the reliability of your installation. Stokman stands for quality, which is why our rollers come with a 3-year warranty.*

Our rollers are unique due to the combination of certified materials, our CNC machined cast steel bearing housings, unique labyrinths, special seals and high-quality bearings. This results in a long service life for Stokman SCW rollers. All our rollers comply with the DIN standards (DIN22112 / DIN15207).

Specialized conveyor belt rollers

Balanced rollers

For the manufacturing of our conveyor belt rollers, certified tubes are used, amongst other things to guarantee the roundness, straightness and minimal imbalance. For some applications, such as belt weighing installations, further balancing may be required. Stokman supplies G6.3 (ISO 21940-11:2016) balanced rollers for these applications.

We are active in the following business sectors:

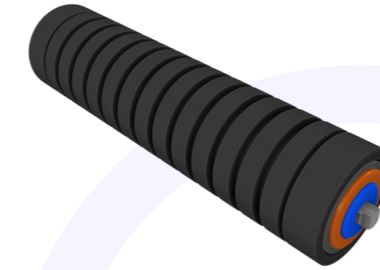
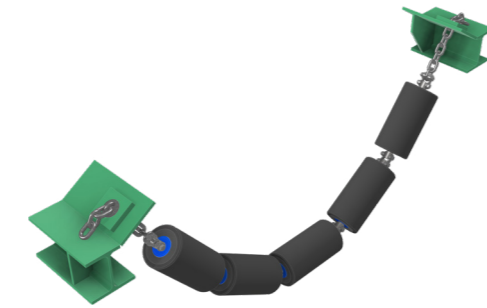
- Quarries and sand and gravel processing companies
- Shipping companies (cable laying vessels, fallpipe vessels and self-unloading dredgers)
- Waste processing companies
- Bioethanol refineries
- Animal food processing companies (AGRI bulk)
- Transfer terminals for iron ore and coal
- (Open cast) mines
- Food industry

Conveyor Roller Specifications	
Description	Overview
Tube material	S235 / Stainless steel / hot-dipped galvanized
Shaft material	S235 / Stainless steel
Wall thickness	3.2 / 4.0 / 4.5 / 6.3 / 8.0 / 12.5
Bearings	6204 / 6206 / 22.206 / 6308 / 2310 / 22.310
Shaft diameters	Ø 20 / 30 / 40 / 50 / 60
Tube diameters	Ø 89 / 108 / 114 / 133 / 159
Tube diameters (on request)	Ø 70 / 102 / 127 / 152 / 167 / 176 / 194 / 202 / 219
Coating diameters	Ø 108 / 133 / 159 / 180 / 194 / 219 / 250 / on request
Type of coating / preservation	Rubber / polyurethane
Warranty	Yes*
Tonnage	100 to 6,000 t/h**

*Ask us for our terms of sale **On request above this tonnage

ROLLERS

IMPACT ROLLERS

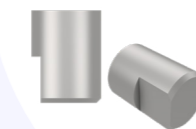


Impact rollers

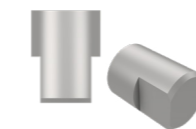
Stokman manufactures and supplies impact rollers that are installed at material transfer points to drastically reduce the negative effects of the loading process and prevent damage to the belt. The rubber impact rings extend the life of your conveyor belt and are extensively tested by us for quality aspects such as load-bearing capacity, elastic and plastic deformation. This allows us to guarantee that your rollers always meet your requirements and function optimally, even under the toughest conditions.

Shaft ends

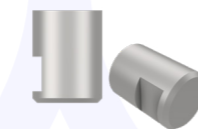
Shaft ends available as standard:



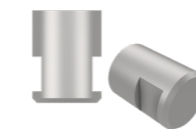
Single FLat SFL



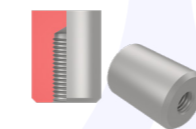
Double FLat DFL



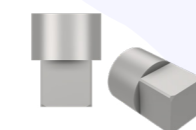
Single SLot SSL



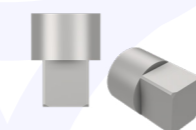
Double SLot DSL



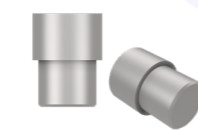
Internal ThreaD ITD



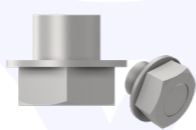
SQuaRe SQR



REctangular REC



RouND RND

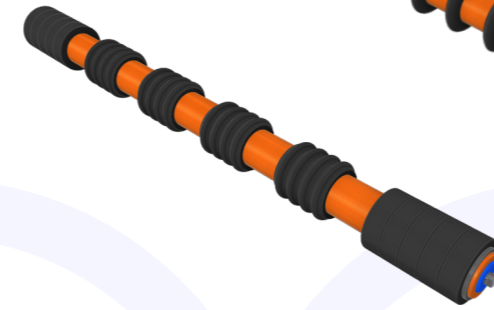


HEXagonal HEX



External ThreaD ETD

RETURN ROLLERS



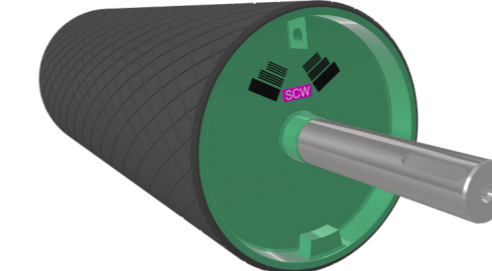
Return rollers

Rubber - Polyurethane

Return idlers have different functions, depending on the type of lagging. These functions are belt cleaning and/or preventing the transported material from sticking to the rollers. The laggings we use also extend the product's lifecycle.

PULLEYS

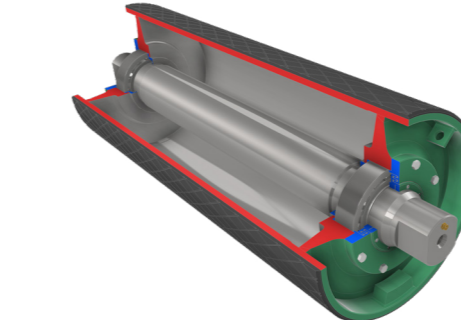
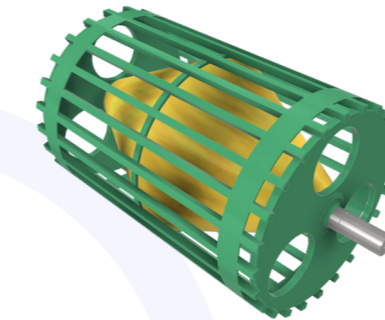
SCW



Pulleys

We make sure that our product is suitable for your system and provide the highest standard in the international market. The pulleys are also covered by a lifetime warranty. *

Our well-equipped workshop with state-of-the-art machinery can also perform repair work on pulleys.



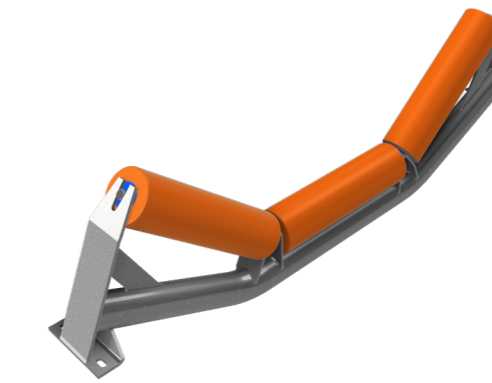
Conveyor Pulleys Specifications	
Description	Overview
Type	MD / HD
Pulley type	Drive / snub / tensioner / tail / diablo / cage
Shell material	S235 / S355 / Stainless steel
Shell thickness	16 / 18 / 20 / 22 / 25 / 30 / 35
Tube diameters	315 / 406 / 508 / 610 / 810 / 1016 / 1250 / 1400
Lagging / preservation	None / paint / rubber / rubber + insert(s) / ceramic
Warranty	Yes*
Tonnage	100 to 10,000 t/h**

*Ask us about our delivery conditions **Anything over this amount upon request

Alternatively, we supply a certificate booklet for a newly supplied Stokman SCW-HD drum, so that you know which materials were used and how they were processed during the production of your pulley.

TROUGHED IDLERS

IDLERS

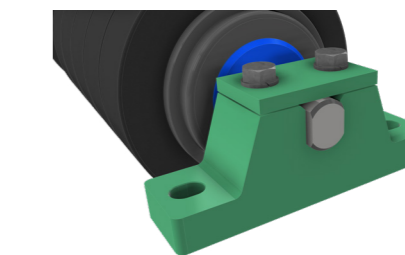


Idlers

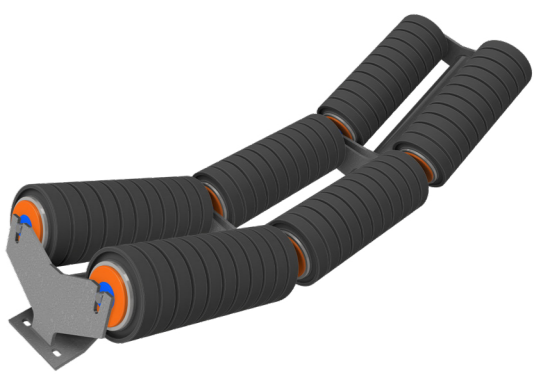
Supports / brackets for rollers

Stokman manufactures and supplies various idler frames, depending on your application.

- Upper rollers idler
- Return rollers idler
- Side guide rollers idler
- Negative roller idler used for conveyor belt alignment
- Brackets for rollers with internal bearings



IDLERS FOR IMPACT-ROLLERS



Idlers can be hot-dipped galvanized and painted or powder coated in your specific color.

